

Mr. Rodefeld
Room 22
Irondale High School
Human Geography
October 9th, 2018





Lilo &
Stitch

1st Hour 8:35 - 9:31

2nd Hour 9:37 - 10:33

3rd Hour 10:39 - 11:35

4th Hour 11:41 - 1:11

5th Hour 1:17 - 2:13

6th Hour 2:19 - 3:15



Disney.com



Disney's
DESKTOP
STOP

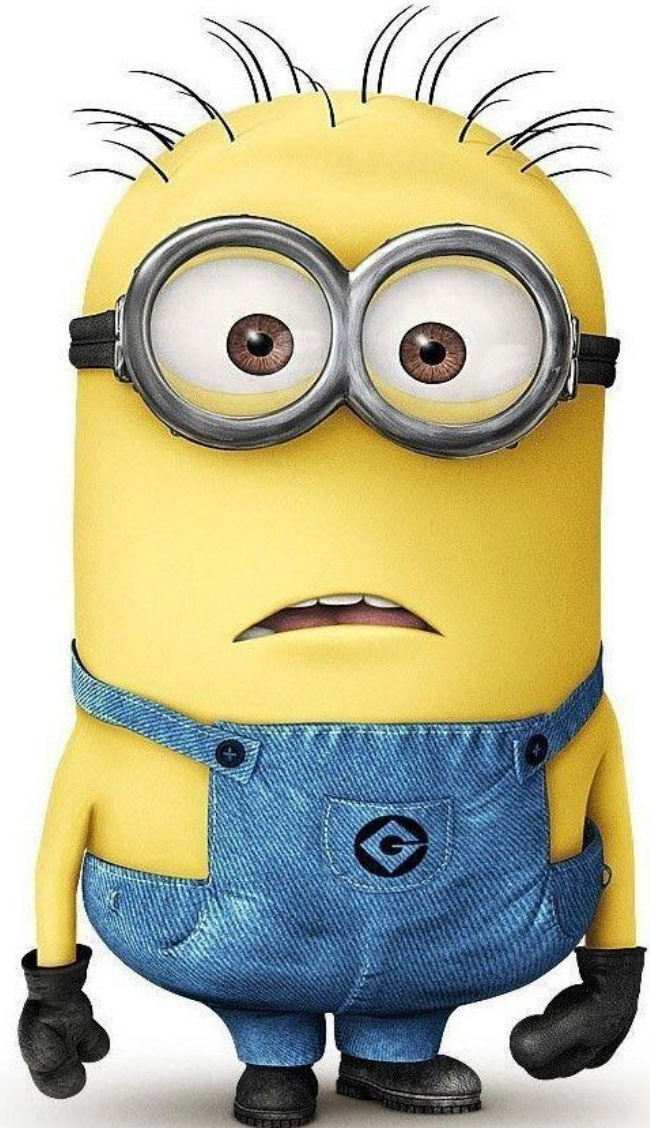
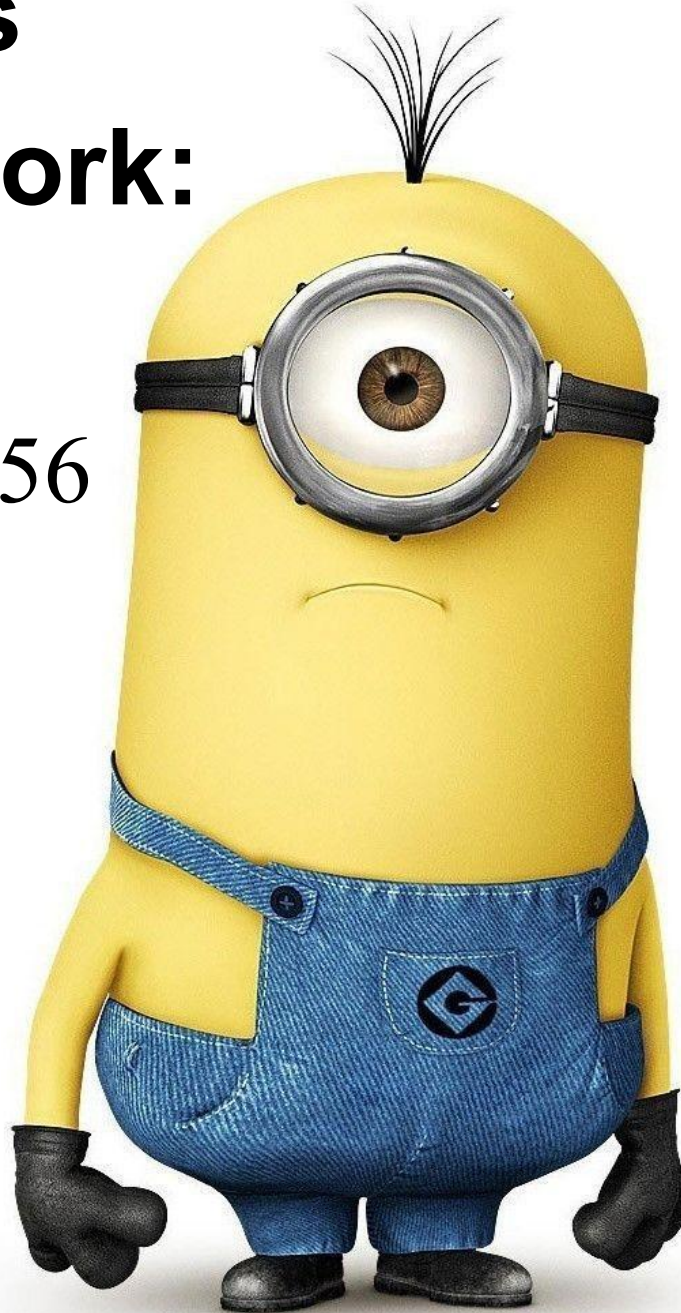
© DISNEY



Today in Class:

Immigration Nation

**Today's
Homework:
Read
Pages 48-56**



Tomorrow in Class

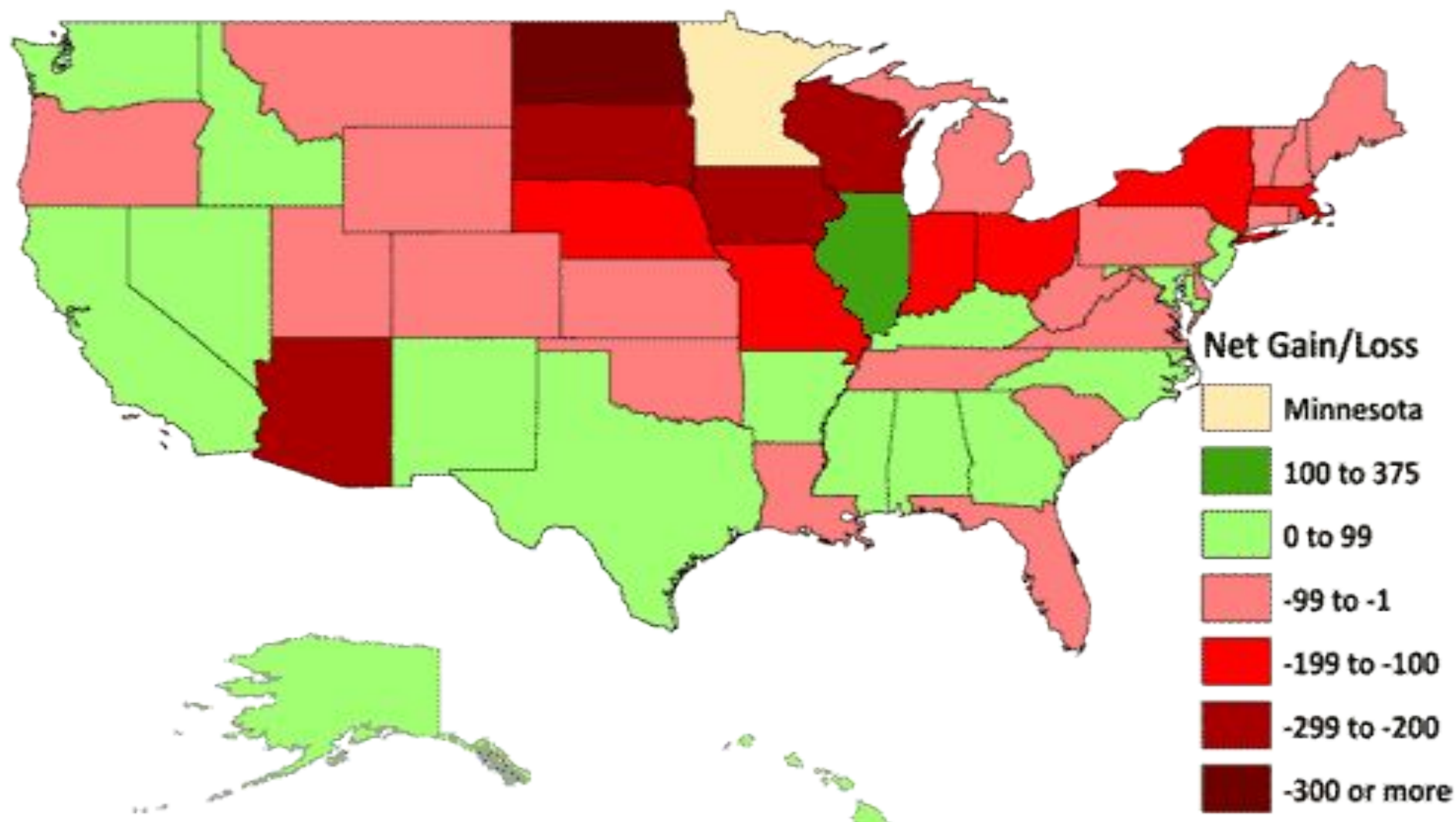
Minnesota Movement



Most Common Country of Origin of Legal Immigrants Other Than Mexico (2012)



Net Gain/Loss for Minnesota Colleges or Universities of High School Graduates Enrolling After High School Graduation (Fall 2012)



3.1 GLOBAL MIGRATION PATTERNS

***Migration**--A permanent move to a new location

*Immigration--Migration **in** to a location

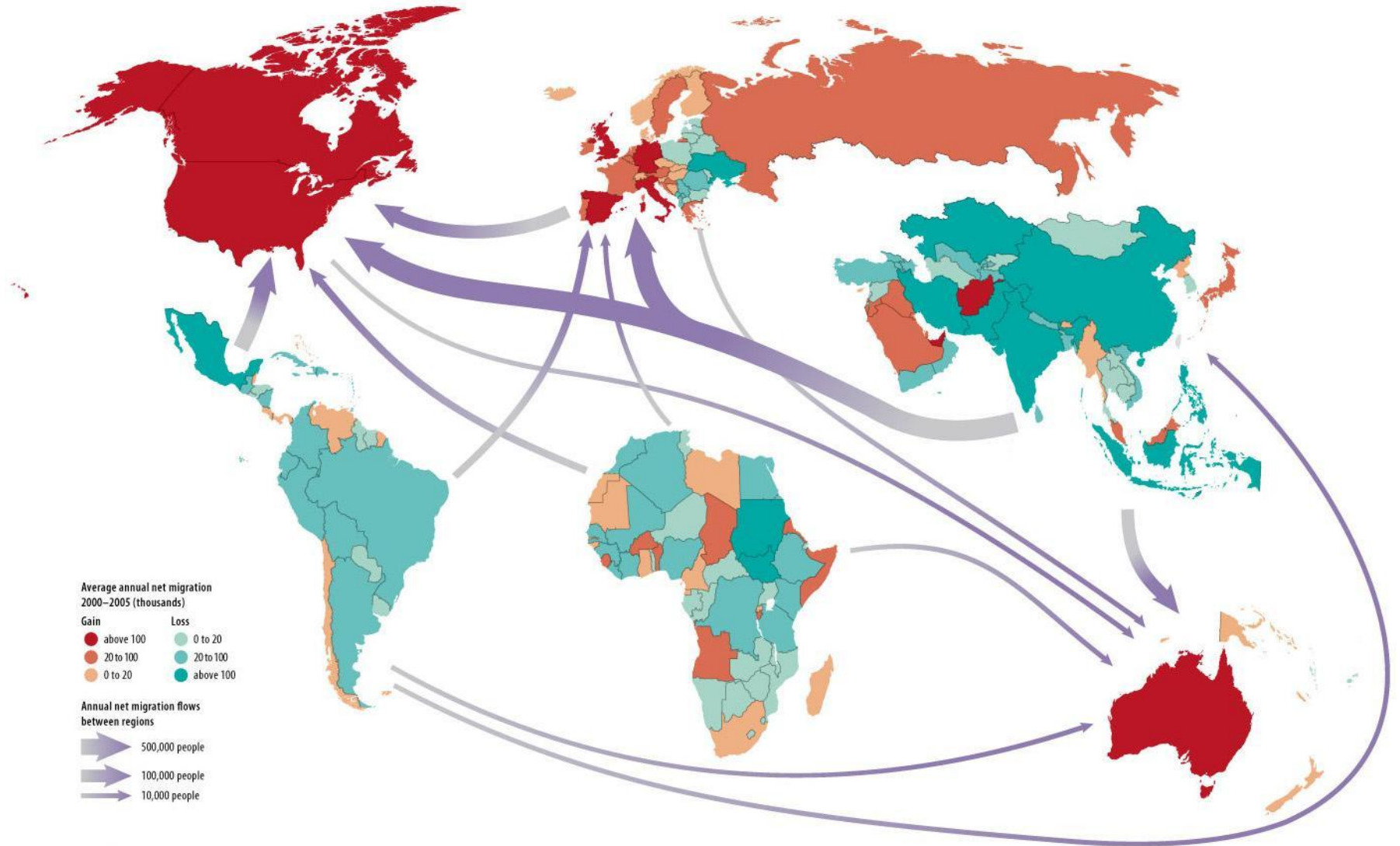
*Emigration--Migration **out** from a location

•Net migration

•Immigrants – emigrants = net migration

Chain Migration: Migration of people to a specific location because relatives or members of the same nationality previously migrated there

3.1 GLOBAL MIGRATION PATTERNS



© 2013 Pearson Education, Inc.

ARTICLE: THE WORLD'S MOST CONGESTED MIGRATION ROUTES SHOWN IN 5 MAPS

<http://news.nationalgeographic.com/2015/09/150919-data-points-refugees-migrants-maps-human-migrations-syria-world/>

Look at the first map of the article and list the 5 current major origin areas of today's refugees.

Central America, Western Africa, Eastern Africa, Syria, Myanmar

INTERNATIONAL AND INTERNAL MIGRATION

International Migration: permanent movement from one country to another

Internal Migration: permanent movement within the same country

****Most migration is internal, and shorter distanced migrations are more common than longer distanced migrations***

INTERREGIONAL AND INTRAREGIONAL MIGRATION

Interregional Migration: permanent movement from one region of a country to another

Intraregional Migration: permanent movement within a region of a country

- most has been from rural to urban*
- now, large movement from urban to suburban*

PUSH AND PULL FACTORS

A **combination** of push and pull factors are usually a part of a permanent move

Push factor: induces people to move away from their current location

Pull factor: induces people to move into a new location

There are political, economic, and environmental push and pull factors

WHAT IS MIGRATION AND WHY DO PEOPLE MIGRATE?

WissensWerte



WHY REFUGEES DON'T FLY



INTERNALLY DISPLACED PERSONS



Those who have fled their homes because of natural or man-made disasters, violence, or persecution. They are displaced within their own country and have not crossed an internationally recognized country border.

REFUGEES



Those who have fled their country because of violence, conflict, or fear of persecution. They are unable or too afraid to seek protection from their country, or return there, for fear of discrimination.

MIGRANTS



Those who have left their homes to live or work elsewhere. Their reasons for leaving vary, and their migration may be voluntary or forced.

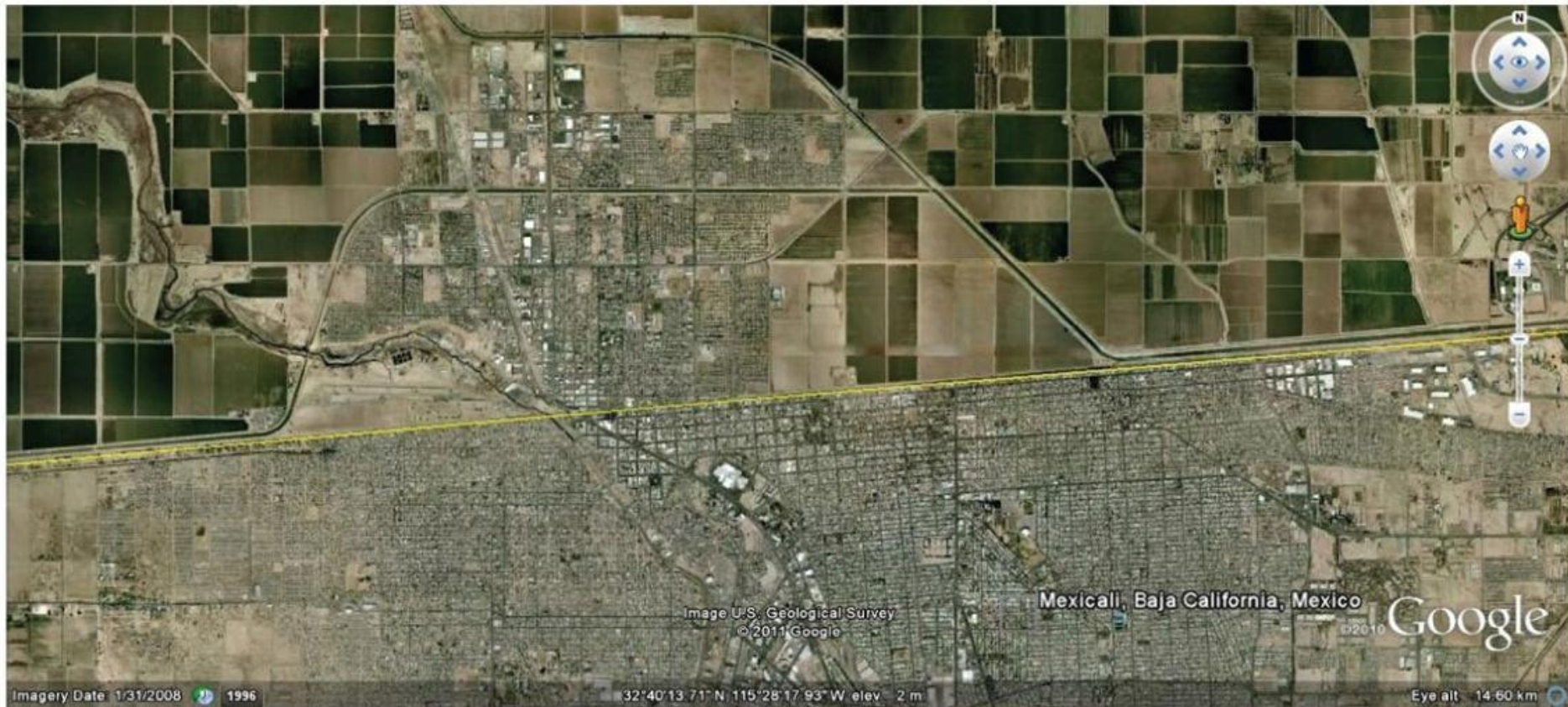
Source: UNHCR/International Organization for Migration. Icons by Gerald Wildmoser and Luis Prado, the Noun Project

DIFFERENCES BETWEEN REFUGEES AND IDPs

Complete [this video guide](#) while watching the clip



U.S. - MEXICO BORDER



COOL MIGRATION INTERACTIVES!

- [World Migration Map](#)
- [Global Migration Flow](#)
- [World Migrants](#)
- [Origins and Destinations of the World's Migrants, 1990-2015](#)
- [World Migration Interactive](#)
- [Interactive American Migration Map](#)
- [Mapping Migration in the U.S.](#)
- [Remade in America: American Migrants](#)

